



 **lapinee**

Spring / Summer

**2024**

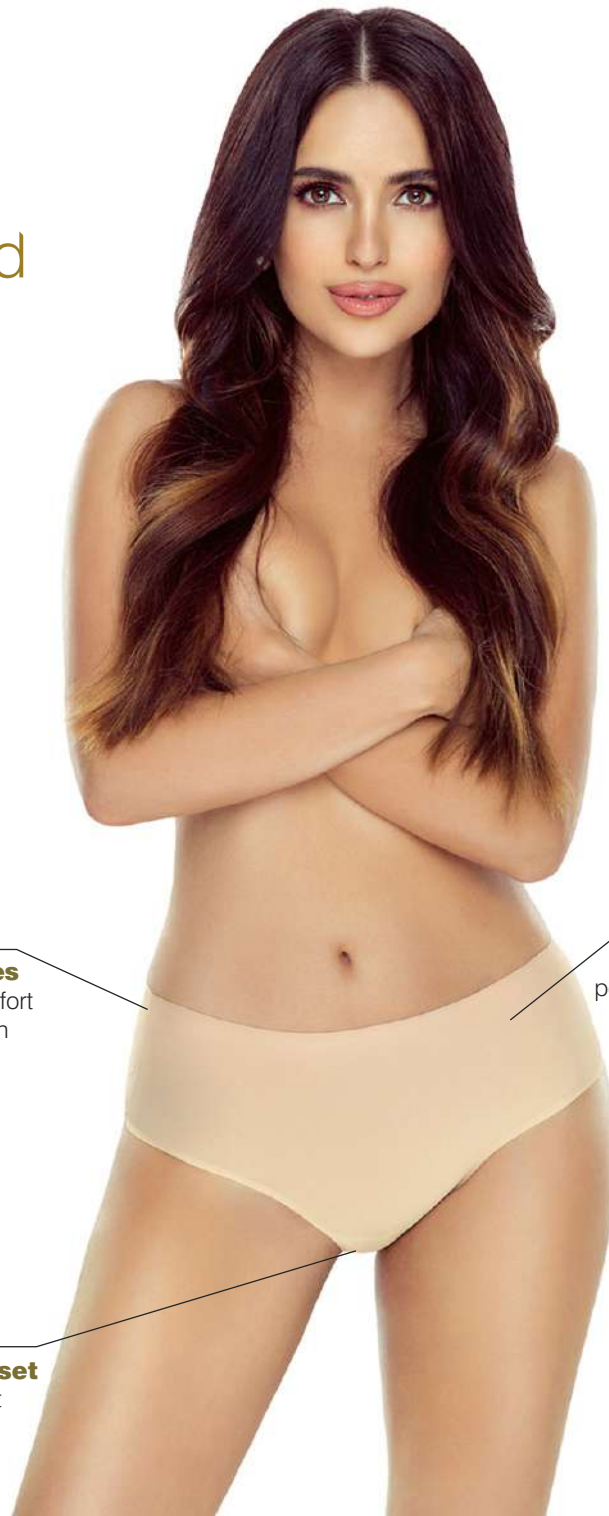
# Charlotte

## 5002

eco trend

**Size:**  
ONE SIZE

**Fabric:**  
80% polyamide, 20% elastane



**Seamless edges**  
provide high comfort  
of wearing, unseen  
under the clothes

**Soft and very  
delicate fabric**  
perfectly fits size S-XL,  
providing second  
skin feeling

**100% cotton gusset**  
increases the comfort  
of everyday use



# Michelle

## 5005

sublime line

**Size:**

S, M, L, XL

**Fabric:**

75% polyamide, 25% elastane



**Waist made using seamless technology**  
doesn't press

**100% cotton gusset**  
increases the comfort of everyday use



**Laser-cut front**  
increases the comfort of everyday use

**No bands and stitchings in the area of leg openings**  
provide comfort of wearing, don't press



# Sophie

## 5006

sublime line

**Size:**

S, M, L, XL

**Fabric:**

75% polyamide, 25% elastane



**Laser-cut lower part of microfiber fabric**

provides a feeling of lightness

**100% cotton gusset**

increases the comfort of everyday use

**Soft waistband**  
provides high comfort of wearing

**No bands and stitchings in the area of leg openings**  
provide comfort of wearing, don't press



# Laura

## 5007

**Size:**  
S, M, L, XL

**Main Fabric:**  
90% cotton, 10% elastane

**Lace:**  
88% polyamide, 12% elastane

organic cotton  
comfort cotton  
line



**Soft waistband**  
provides high  
comfort of wearing

**100% cotton gusset**  
increases the comfort  
of everyday use

**Laser-cut  
front cotton  
part**  
ensures a  
comfortable fit

**The highest  
quality certified  
organic cotton**  
provides comfort  
of everyday use



# Carla

## 5008

**Size:**  
S, M, L, XL

**Main Fabric:**  
90% cotton, 10% elastane

**Lace:**  
88% polyamide, 12% elastane

organic cotton  
comfort cotton  
line



**The highest quality certified organic cotton** provides comfort of everyday use

**100% cotton gusset** increases the comfort of everyday use



**Laser cut** perfectly fit body, unseen under the clothes

**Made using a modern seamless technology** without any side seams

**No bands and stitchings in the area of leg openings** soft fibre, flat seams don't press and do not leave a trace on the body.



# Sisi

## 5009

**Size:**  
S, M, L, XL

**Main Fabric:**  
90% cotton, 10% elastane

**Lace:**  
88% polyamide, 12% elastane



comfort cotton  
line

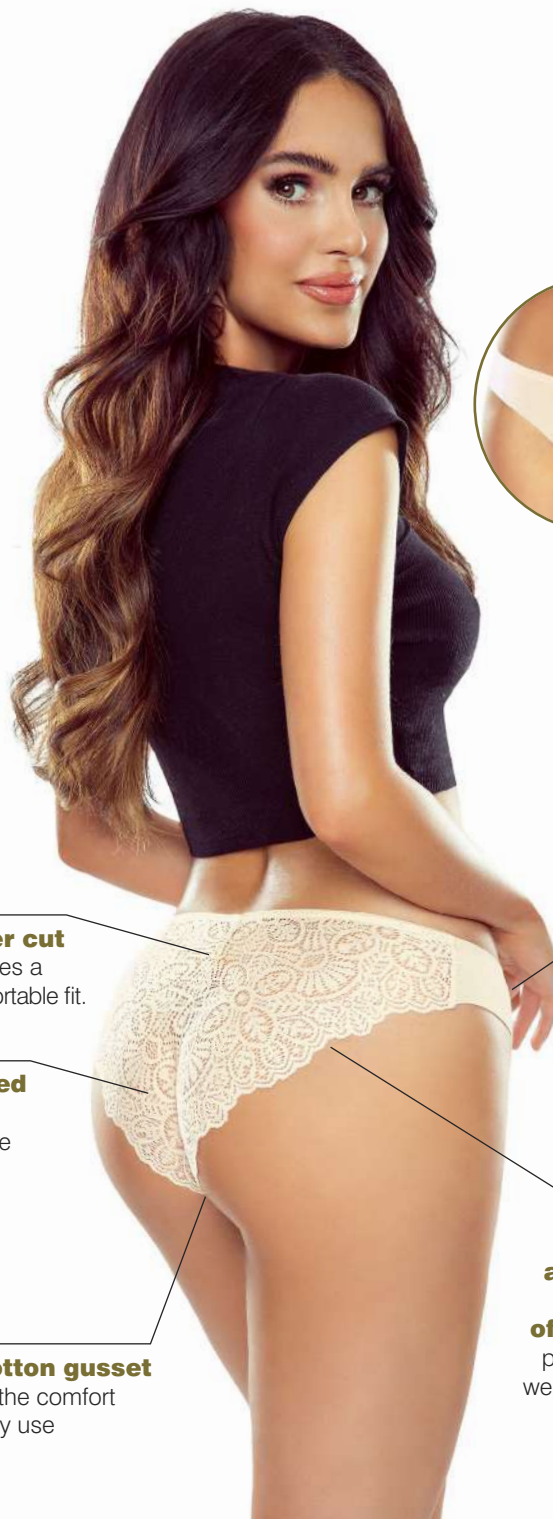


**Laser cut**  
ensures a  
comfortable fit.

**The highest quality certified  
organic cotton**  
provides comfort of everyday use



**100% cotton gusset**  
increases the comfort  
of everyday use



**Waist made  
using  
seamless  
technology**  
doesn't press  
and leave a trace  
on the body

**No bands  
and stitchings  
in the area  
of leg openings**  
provide comfort of  
wearing, don't press

# Adele

## 5011

sublime line

**Size:**

S, M, L, XL

**Fabric:**

75% polyamide 25% elastane

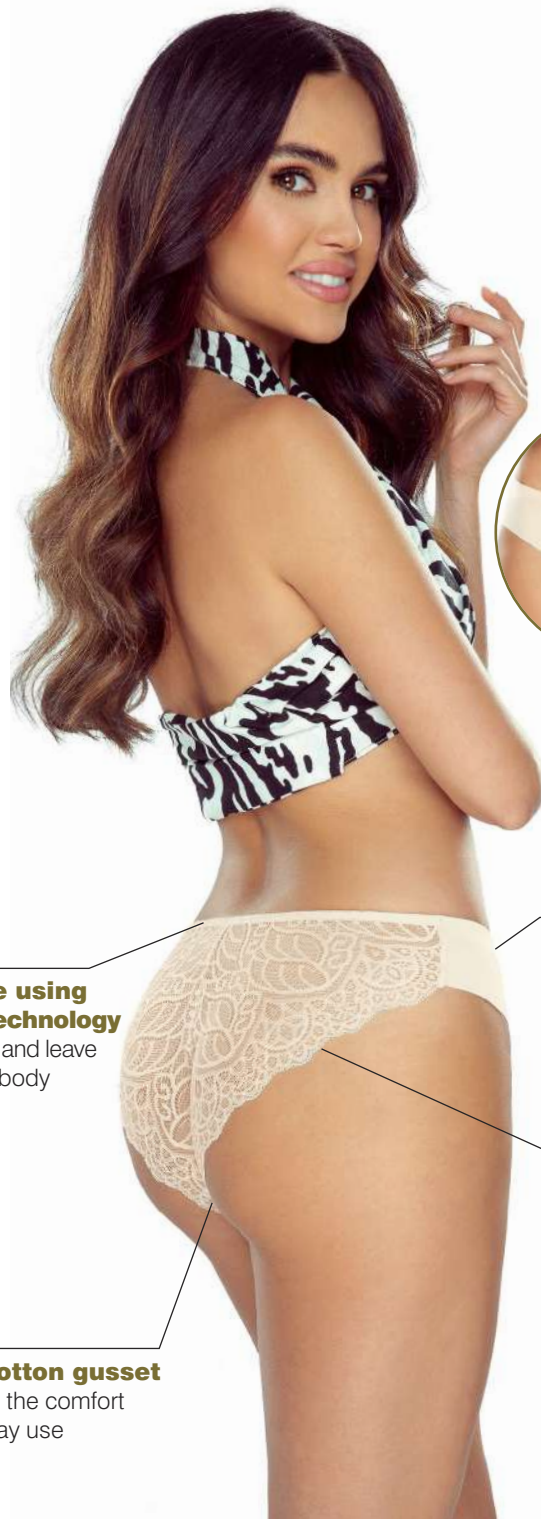


**Waist made using seamless technology**  
doesn't press and leave a trace on the body

**Front microfiber part is laser cut**  
provides lightness feeling

**No bands and stitchings in the area of leg openings**  
provide comfort of wearing, don't press

**100% cotton gusset**  
increases the comfort of everyday use





# Coco

## 5012

sublime line

**Size:**

S, M, L, XL

**Fabric:**

90% polyamide, 10% elastane



**100% cotton gusset**  
increases the comfort  
of everyday use



**Soft waistband**  
provides high  
comfort of wearing

**Soft and flexible lace**  
perfectly fits the figure

# Pola

## 5013

**Size:**  
S, M, L, XL

**Main Fabric:**  
90% cotton, 10% elastane

**Lace:**  
88% polyamide, 12% elastane

organic cotton  
comfort cotton  
line



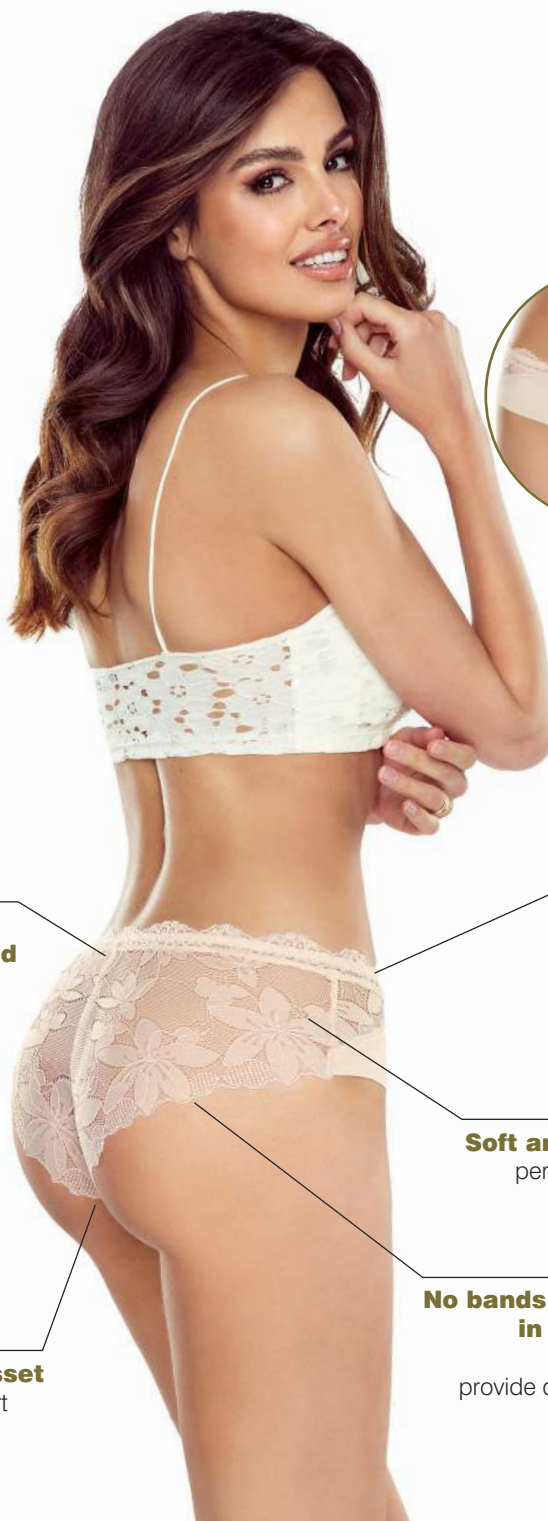
**The highest quality certified organic cotton**  
provides comfort of everyday use

**100% cotton gusset**  
increases the comfort of everyday use

**Soft waistband**  
provides high comfort of wearing

**Soft and flexible lace**  
perfectly fits the figure

**No bands and stitchings in the area of leg openings**  
provide comfort of wearing, don't press



# Lily 5014

sublime line

**Size:**  
S, M, L, XL

**Fabric:**  
75% polyamide, 25% elastane



**Soft waistband**  
provides high  
comfort of wearing



**100% cotton gusset**  
increases the comfort  
of everyday use



**Microfiber front**  
ensures a comfortable fit

**Soft and flexible lace**  
perfectly fits the figure



# Sarah

## 5016

**Size:**  
S, M, L, XL

**Main Fabric:**  
90% cotton, 10% elastane

**Lace:**  
88% polyamide, 12% elastane

organic cotton  
comfort cotton  
line



**The cotton and lace back**  
emphasizes the floral,  
stylistically sophisticated  
motif

**There is a delicate  
flexible band**  
sewn onto the inside  
of the waistband

**The edges around  
leg openings  
laser-cut**  
without sewings  
or flexible bands

**100% cotton gusset**  
increases wearing comfort



# Viva

## 5019

sublime line

**Size:**  
S, M, L, XL

**Fabric:**  
75% polyamide, 25% elastane



### **Spectacular lace**

emphasizes the shape of the buttocks

**100% cotton gusset**  
increases wearing comfort

### **There is a delicate flexible band**

sewn onto the inside of the waistband

### **Soft microfiber front**

ensures a comfortable fit

### **No bands and stitchings**

in the area of leg openings



# Gigi 5020

**Size:**  
S, M, L, XL

**Main Fabric:**  
90% cotton, 10% elastane

**Lace:**  
88% polyamide, 12% elastane

organic cotton  
comfort cotton  
line



**There is a delicate flexible band**  
sewn onto the inside  
of the waistband

**100% cotton gusset**  
increases wearing comfort



**The highest quality certified organic cotton**  
enables comfort of  
everyday use

**No bands and stitchings in the area of leg openings**  
laser-cut, don't press,  
unseen under the clothes



# Cindy

## 5021

sublime line

**Size:**

S, M, L, XL

**Fabric:**

75% polyamide, 25% elastane



**Spectacular lace**

emphasizes the shape of the female figure



**100% cotton gusset**

increases wearing comfort



**Decorative string**

around the waist for individual styling, can be shortened or removed freely

**There is a delicate flexible band**

sewn onto the inside of the waistband

**The inside of the front is lined with an elastic mesh**

it eliminates the see-through of the lace.

# Salma

## 5022

sublime line

**Size:**  
S, M, L, XL, 2XL

**Fabric::**  
75% polyamide, 25% elastane



**Wide, soft elastic band**  
provides perfect fit

**Wider sides**  
adapt to every figure

**Laser cut area of leg openings**  
it neither has any elastic bands nor stitchings

**100% cotton gusset**  
increases comfort of everyday use



# Diana

## 5023

sublime line

**Size:**

S, M, L, XL

**Fabric:**

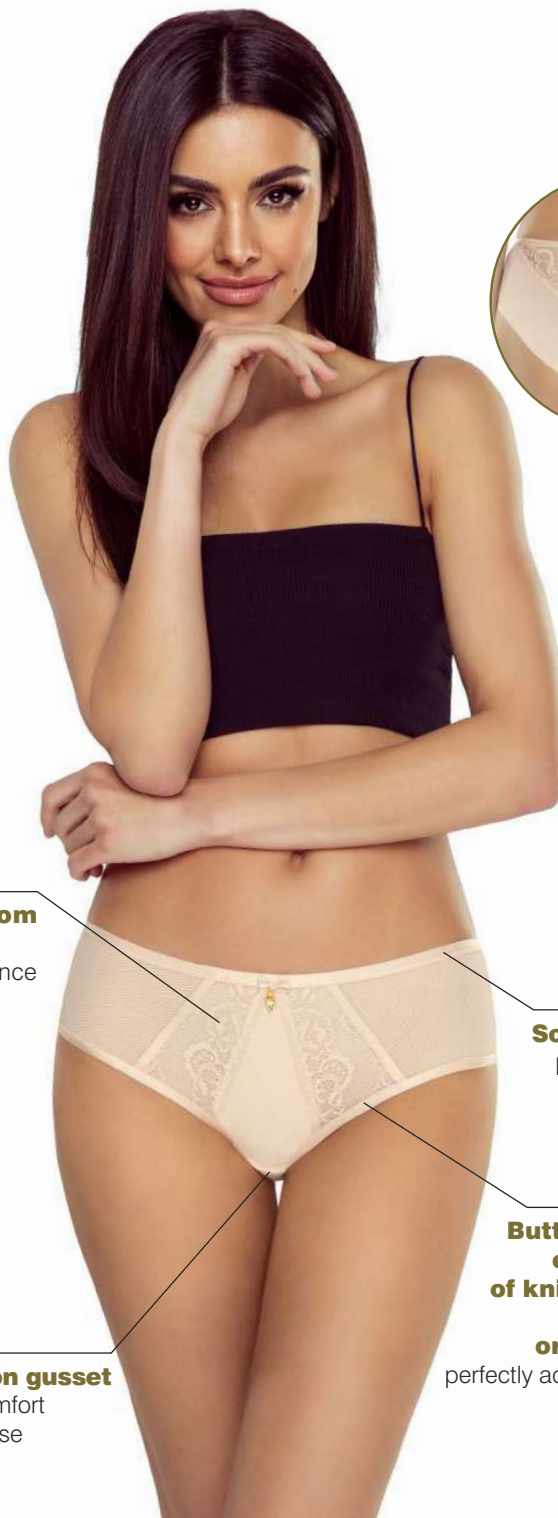
75% polyamide, 25% elastane



**Masking mesh from the inside front**  
eliminates lace clearance



**100% cotton gusset**  
increases comfort  
of everyday use



**Soft elastic band**  
provides perfect fit

**Buttock line made of double layer of knitwear without any stitching or elastic bands**  
perfectly adheres to the body



# Zula

## 5024

sublime line

**Size:**  
S, M, L, XL, 2XL

**Fabric:**  
90% polyamide, 10% elastane



**Soft elastic band  
sewn into the waist**  
provides perfect fit

**Masking mesh  
at the front**  
eliminates lace clearance

**Back lace of the  
buttocks line without  
stitching or elastic  
bands**  
will emphasize the shape  
of the figure

**100% cotton gusset**  
increases comfort  
of everyday use



# The Cardboard display stand

Size:

45 x 40 x 28 cm





**Lapinee Sp. z o.o.**

ul. Gotańska 37/49  
30-619 Kraków, Poland  
phone +48 576 25 45 45  
e-mail: [biuro@lapinee.pl](mailto:biuro@lapinee.pl)  
[www.lapinee.pl](http://www.lapinee.pl)